



**SUSTAINABILITY  
MADE DIFFERENT  
THE MEASURE  
OF OUR ACTIONS**

A black and white portrait of two people, a woman on the left and a man on the right, looking directly at the camera. The background is a textured, light-colored wall. The image is partially overlaid by a dark teal banner at the bottom.

Stefan {  
Forman Production  
Beckum, Germany



Anja  
Project Assistant,  
Project Engineering  
Aarhus, Denmark

# OUR GOAL: LONG-TERM SUCCESS FOR YOU

Throughout our 75-year history, one thing has been confirmed time and time again: long-term success beats short-term profits. Sustainability – whether economical, environmental, or social – has always played a central role at BEUMER Group. To quantify its significance, and to make it possible for us to prove our commitment externally, we have developed the BEUMER Sustainability Index.

# OUR THREE LEVELS OF COMMITMENT

## ECONOMIC

---

Economy is the area entrepreneurs are most familiar with, at least at first glance. After all, economic performance, market presence, financial opportunities and risks are known quantities. But our products and systems only become sustainable in economic terms if we orient them and the associated production processes along long-term customer benefits.

- › Cost efficiency
- › Lifelong cycle
- › Operating and maintenance costs
- › Energy consumption during operation
- › Efficient and sustainable customer support

## ENVIRONMENTAL

---

Companies that want to continue manufacturing in the future must create the necessary conditions today. Scarce resources must be used cautiously. All efforts must be directed towards continuously reducing energy consumption in the production cycle and in ongoing plant operations. We minimise waste and emissions and optimise all our transport routes and packaging.

- › Production-based resource consumption
- › Production-based energy consumption
- › Operations-based energy consumption
- › Materials consumption, waste, emissions from operations
- › Packaging, transportation, disassembly, disposal

## SOCIAL

---

In the trend toward globalisation in recent years, local social commitment from companies was frequently considered as an obstacle and employees as mere cost factors. We think that is wrong. No company acts in a vacuum. Long-term market success is only possible if social factors such as health, occupational and product safety, as well as employment and manufacturing conditions, are favorable. This correlation is reflected in our products. BEUMER Group is certified under ISO 9001 as well as under OHSAS 18001 for work and health management and ISO 14001 for environmental management.

- › Customer benefits:  
occupational health and safety
- › Training and education standards
- › Health and safety standards
- › Working conditions
- › Development impulses for the region

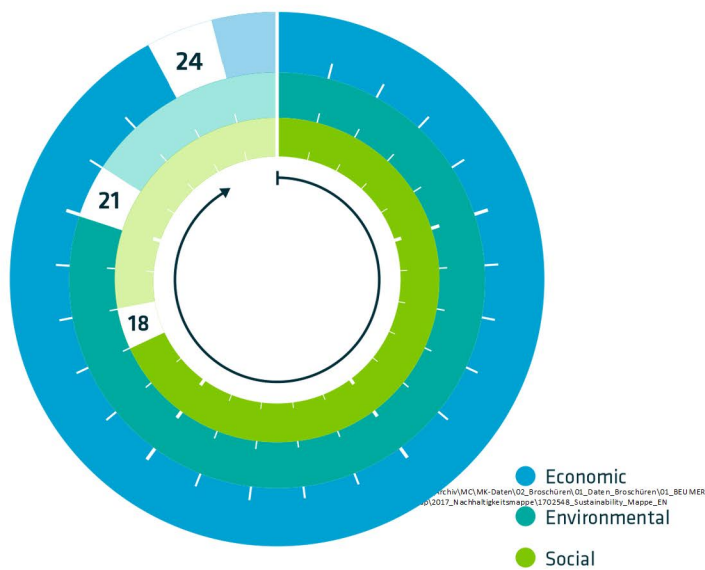


## MADE DIFFERENT

Products and technologies carrying BEUMER's "made different" seal are characterised by their sustainability, based on their economic, environmental, and social performance as measured by the BEUMER Sustainability Index (BSI).

# MEASURE US BASED ON OUR VALUES

Sustainability has to be measurable. That's why we have introduced the BEUMER Sustainability Index – a consistent validation system for all our products.



Each of the three areas – economic, environmental, and social – is evaluated in five categories where a rating of 1-5 points is assigned. The totals are entered clockwise in the respective circle. The closer they are at the vertical ideal line, the higher is their sustainability factor.

## BEUMER SUSTAINABILITY INDEX LEVEL:

Area index	Total index	Level
19 - 25	56 - 75	Excellent
12 - 18	35 - 55	Very good
0 - 11	0 - 34	Improvable

The area values are added to arrive at the total value, which in turn determines the level to which a product is assigned (see table above). If a product is rated “improvable,” it is subjected to a reengineering process in order to move up to a higher level.



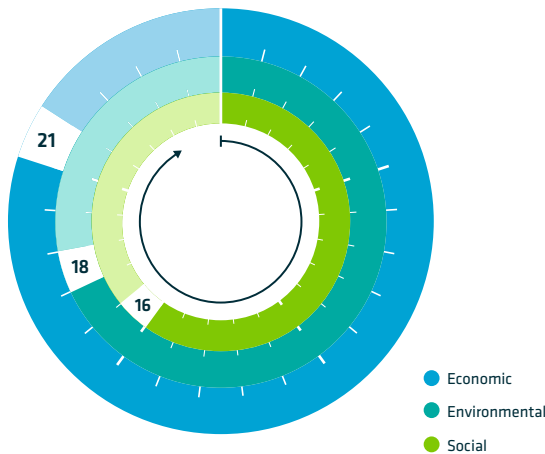
# BEUMER OptiDrive® – POWERFUL DRIVE WITH HIGH ENERGY SAVING AND LOW MAINTENANCE COSTS

Products and technologies carrying BEUMER's "made different" seal are characterised by their sustainability, based on their economic, environmental, and social performance as measured by the BEUMER Sustainability Index (BSI).

## PRODUCT GROUP

- › Sorting & distribution › Loop sorters › Drives
- › BEUMER OptiDrive®

**55**  
Level:  
Very good



## YOUR DRIVE WITH FULL SUSTAINABILITY

The BEUMER OptiDrive® features a high sustainability index of 55 (Very good). You also profit from the economic index of 21 which is based on several factors, such as significantly reduced investment and operating costs thanks to low energy consumption and maintenance.

The new BEUMER OptiDrive® drive system keeps your sorting system running energy-efficiently and reliably. You profit not only from the high availability of your system, but from reduced investment and operating costs, low maintenance and lower noise emission. The BEUMER OptiDrive® can be used for nearly all of our loop sorters and can be retrofitted in existing BEUMER systems if necessary.

## EFFICIENCY FOR COST REDUCTION

Economic advantages for you – with new sorting systems and existing systems: Our BEUMER OptiDrive® saves up to 80 % energy compared with conventional sorting drives with asynchronous linear motors. That permanently cuts energy costs in operation. And thanks to the higher efficiency of the BEUMER OptiDrive®, fewer drives are required per system so you also save investment and installation costs.

## GREEN DRIVE FOR THE ENVIRONMENT

Lower energy consumption saves fossil resources. Our BEUMER OptiDrive® plays an active role in protecting the environment thanks to up to 80% lower energy consumption. It can also be retrofitted for use in the 250 or more existing BEUMER sorting systems. Moreover, far smaller amounts of valuable metals need to be used in motors and supply cables of the BEUMER OptiDrive® thanks to the higher efficiency. This also saves resources.

## HIGHER OPERATING RELIABILITY AND BETTER WORKING CONDITIONS

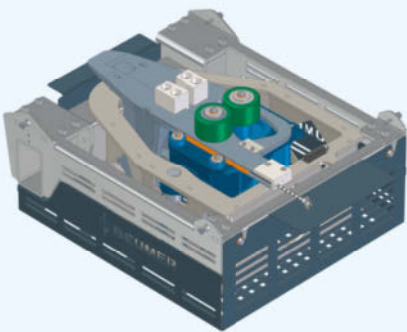
The BEUMER OptiDrive® also takes social issues such as safety at work and the working environment into account. The double-acting drive stops the sorter very quickly in case of an emergency stop and thus reduces the risk of accidents at work. Your employees are exposed to less noise since the drive system does not require a fan. Ease of assembly, maintenance and repair enable simple handling.



## POWER SAVING SORTING WITH THE BEUMER OptiDrive®

### AT A GLANCE: BEUMER OptiDrive®

- › 80% less energy consumption compared with conventional sorter drives
- › Savings of investment, installation and operating costs
- › Quiet operation with less than 68 dB
- › Efficient direct drive with double-acting, proportional friction pressure
- › Online diagnostics and remote maintenance capability
- › Retrofittable in existing BEUMER sorting systems



### INNOVATIVE DIRECT DRIVE

The BEUMER OptiDrive® is an innovative, low-noise direct servo drive based on the friction wheel principle. The contact force of the friction wheel automatically adjusts itself in proportion to the drive force required so that the friction wheel always operates at its optimum working point. That optimises the efficiency in the partial load range and minimises wear.

The proportional friction pressure system, for which a patent is pending, acts in two directions. As a result the BEUMER OptiDrive® can drive or brake the sorting system with the same force.

### SIMPLE, RELIABLE OPERATION

Convenient automatic system: The BEUMER OptiDrive® automatically aligns itself with the carrier.

The quality of our new drive is also evident in the improved friction strip geometry, which enables an optimum transition from one carrier to the next, as well as in the automatic alignment and wear compensation. Functions for online fault diagnosis and remote maintenance also ensure reliable operation. In this way, possible faults can be detected and cleared at any hour of the day or night.

If a fault cannot be fixed immediately, the drive can be decoupled from the sorter in a few simple steps, thereby reducing system downtimes to a minimum.



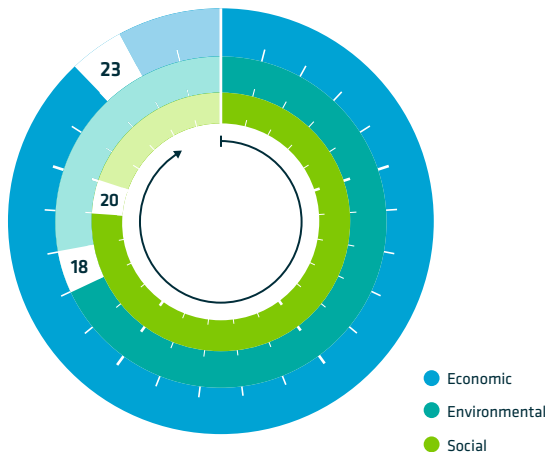
# LS-4000 – THE GREEN HIGH-CAPACITY SORTATION SYSTEM

Products and technologies carrying BEUMER's "made different" seal are characterised by their sustainability, based on their economic, environmental, and social performance as measured by the BEUMER Sustainability Index (BSI).

## PRODUCT GROUP

- > Sortation > Loop sorter
- > LS-4000

**61**  
Level:  
Excellent



## LOOP SORTER WITH EXCELLENT SUSTAINABILITY PLATFORM

With a sustainability index rating of 61, Crisplant's LS-4000 achieves an excellent sustainability performance. Equipped with the energy-efficient LSM, the LS-4000 reduces the overall PLCC substantially without sacrificing speed, capacity, and reliability. Contact us to try out the new PLCC calculation tool and calculate the PLCC for your new LS-4000 sorting system.

The LS-4000 high-speed loop sorters from Crisplant feature the highest layout flexibility with reduced installation and commissioning time. The new sorter technology delivers real environmental benefits with reduced carbon-dioxide emissions and increased energy efficiency to provide the lowest product life cycle cost (PLCC).

## ECONOMICALLY SOUND SOLUTION

LS-4000 provides a platform for different loop sorter models like the Tilt-tray sorter LS-4000E and the Cross-belt sorter LS-4000CB. This unique platform enhances the flexibility of the total system, including optimised conditions for integration into an existing environment, up to 10° incline/decline of sorter for access to other floor levels, and more usage of floor space for storage. Equipped with the energy-efficient linear synchronous motor (LSM), the LS-4000 reduces the overall PLCC substantially without sacrificing speed, capacity, and reliability. The high-speed LSM eliminates contact between moving parts, leading to low wear-and-tear and low noise levels.

## SMALL CARBON FOOTPRINT

Increased productivity and efficiency, a safer working environment for staff, and actively reducing carbon dioxide (CO<sub>2</sub>) emissions from daily operations are among the benefits of the LS-4000 sorting system. The LS-4000 was the first sorter to incorporate the innovative linear synchronous motor (LSM) technology. The LSM has proven its value at customer sites all over the world, reducing the energy consumption by up to 75% compared to loop sorter systems with conventional drive technology.

## CORPORATE SOCIAL RESPONSIBILITY (CSR)

Certified for quality, health, and environmental friendliness by ISO 9001, ISO 14001, and OHAS 18001 certifications, we ensure that our customers experience a stable and satisfactory quality with care for both the environment and the well-being of the employees.



## HIGH-SPEED SORTATION WITH LOW POWER CONSUMPTION

### AT A GLANCE: LS-4000

- › Unique linear synchronous motor drive system saves 75 % on energy compared to conventional systems
- › Reduced spare-parts requirements due to high reliability and MTBF
- › Improved and proven life cycle cost (PLCC)
- › Low noise level during operation
- › Certification under ISO 9001, ISO 14001, and OHAS 18001

### MODULAR PLATFORM

The LS-4000 high-speed loop sorters from Crisplant feature the highest layout flexibility with reduced installation and commissioning time. The new sorter technology delivers real environmental benefits with reduced CO<sub>2</sub> emissions and increased energy efficiency to provide the lowest product life cycle cost. The LS-4000 is a high capacity system that quickly and accurately sorts items using a new state-of-the-art energy system.

As a new common platform, the LS-4000 enhances the flexibility of the total system, including optimised conditions for integration into an existing environment, up to 10° incline/decline for access to other floor levels, and more available floor space for storage, trucks, and other needs. The sorters have less components tested at the factory to reduce the installation and commissioning time. In addition, the sorters come with a large complementary line of inductions, chutes, and controls.

### LS-4000CB - CROSS-BELT SORTER

The LS-4000CB is designed to transport and sort items that present difficulties during traditional sortation, such as fragile and high-friction items. The gentle belt-sorting allows for horizontal discharge of items to ensure precise position and orientation throughout the entire process. The items to be transported may be up to 1,400 millimeters (55 inches) long and up to 800 millimeters (32 inches) wide. The item weight for single-belt items is 30 kilograms (66 pounds) – in certain applications even up to 50 kilograms (110 pounds).

### LS-4000E - TILT-TRAY SORTER

With the flexibility of its fully electronic tilt mechanism, the LS-4000E banks the trays through curves to counter centrifugal forces. It allows for speeds of up to 3 meters per second (590 feet per minute). The tilt mechanism has a maximum angle of 45 degrees, resulting in superior discharge control and accuracy. The items to be transported may have a length and width of up to 1,000 millimeters (39.4 inches). Spanning two-trays, the maximum length extends to 1,600 millimeters (63 inches). The item weight for single-tray items is 50 kilograms (110 pounds) with standard carriers and up to 60 kilograms (132 pounds) in certain applications.

All of these features make the LS-4000 platform the clear choice for a broad spectrum of applications, including warehouse and distribution, post and parcel delivery, baggage handling, and manufacturing.

BEUMER Group GmbH & Co. KG  
Postfach 1254 · D-59267 Beckum  
Phone +49 (0) 25 21 - 24 0  
Fax +49 (0) 25 21 - 24 280  
E-Mail: [beumer@beumergroup.com](mailto:beumer@beumergroup.com)

For more information, visit  
[www.beumergroup.com](http://www.beumergroup.com)

Beumer reserves the right to make  
modifications that serve technical progress.





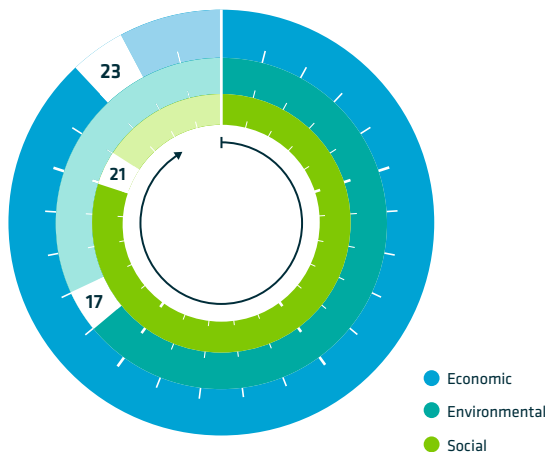
Products and technologies carrying BEUMER's "made different" seal are characterised by their sustainability, based on their economic, environmental, and social performance as measured by the BEUMER Sustainability Index (BSI).

# BEUMER Sorter BS 7 Belt Tray – THE SUSTAINABLE HIGH-PERFORMANCE SORTING SYSTEM FOR YOUR PRODUCTS

## PRODUCT GROUP

- > Sorting & distribution > Loop sorters
- > BEUMER Sorter BS 7 Belt Tray

**61**  
Level:  
Excellent



## OUTSTANDING SUSTAINABILITY FOR THE HIGH-PERFORMANCE SORTER

The BEUMER Sorter BS 7 Belt Tray features outstanding sustainability of the highest level as verified by a sustainability index of 61 (excellent). The economy index of 23 is based, for example, on a high throughput rate with very high sorting quality, low operating costs, and extremely low spare parts requirements.

The BEUMER Sorter BS 7 Belt Tray is your sustainable, reliable high-performance sorting system for a wide range of different articles – from postal items, textiles and mail order articles to food. It features moving conveyor belts with a contactless power supply and fast, precise, and gentle product sorting.

## ECONOMIC TOP PERFORMANCE

You make significant operating cost savings with this sorter thanks, for example, to 50 % fewer individual parts. In addition, a contactless power supply and durable aluminium minimise the requirement for spare parts. Maintenance effort is 80 % less than with conventional cross belt sorters. The gap between the carriers has been bridged with a strong flat cover which reduces damage to articles, conveyor jams, and system downtimes. At the same time, the high sorting quality prevents complaints from your customers. And thanks to the high throughput, you are perfectly equipped for increasing sorting volumes in the future.

## INTEGRATED ENVIRONMENTAL PROTECTION

Our BEUMER Sorter BS 7 Belt Tray requires no additional generators or batteries. Contactless power supply and data transmission avoid mechanical friction losses, while the use of lightweight aluminium components saves energy. The fact that fewer individual parts are used also reduces energy consumption in production and operation as well as maintenance expenditure. And naturally, the sorter can also be maintained remotely, thereby reducing the number of service trips that need to be made. That means less fuel consumption and CO<sub>2</sub> emissions.

## SOCIAL RESPONSIBILITY

Our sorter helps create a more pleasant working environment thanks to significantly lower noise generation and vibrations. It also facilitates the automatic sorting of a wide range of goods which would otherwise need to be carried out manually. Naturally, it also complies with the EC Machinery Directive, thereby providing a high level of protection for personnel and equipment.



## GENTLE ARTICLE SORTING WITH THE BEUMER Sorter BS 7 Belt Tray

### AT A GLANCE: BEUMER Sorter BS 7 Belt Tray

- › Less wear and lower energy consumption and maintenance effort thanks to 50 % fewer individual parts and aluminium components
- › Significantly reduced spare parts requirement
- › Energy supply on demand through contactless power supply
- › 80 % lower maintenance costs compared with standard power supply systems based on contact line
- › Low servicing costs thanks to low-maintenance carrier
- › Very low noise in operation
- › DIN ISO 9001 quality management system

### MODULAR CONSTRUCTION

Our BEUMER Sorter BS 7 Belt Tray is of modular construction and ideally suited for fast, precise sortation of large numbers of goods. It comprises 50 % fewer individual parts compared with other cross belt sorters.

The sorter is made up of a number of moving conveyor belts, so-called belt trays. These are arranged at an angle of 90° to the direction of conveying of the sorter so that they can feed in or discharge the articles to be conveyed to the left or to the right. The articles to be conveyed are fed onto the belt tray at a speed adapted to the sorter speed and the feed angle. Discharging of the articles is the reverse process. The belt moves in the discharge direction and the sorted article is directed gently to the destination.

The use of the belt tray makes it possible to deploy narrow destinations arranged close together. As a result, the sorter takes up little space.

### CONTACTLESS POWER SUPPLY

The outstanding feature of our BEUMER Sorter BS 7 Belt Tray is its unique system of contactless power supply. The usual mains supply is converted into a medium frequency current, enabling electrical energy to be transferred from a fixed power supply source to a moving transformer via an air gap of approximately 5 mm or "finger width."

A very high coupling efficiency of up to 98 % is attainable due to the selected frequency. On the belt tray, the medium frequency current is converted into direct current by means of the MF/DC converter. The MF/DC converter is equipped with a microprocessor-controlled power output stage for controlling the belt tray DC motor. The MF/DC converter likewise receives the control commands by contactless means via an infrared data interface.




*Products and technologies carrying BEUMER's "made different" seal are characterised by their sustainability, based on their economic, environmental, and social performance as measured by the BEUMER Sustainability Index (BSI).*

# BEUMER FILLPAC® FFS – SUSTAINABLE FILLING AND HEAT SEALING

## PRODUCT GROUP

- › Packaging › Filling technology › Chemical industry
- › BEUMER fillpac® FFS

**60**  
Level:  
Excellent



### INNOVATIVE FORM-FILL-SEAL SYSTEM WITH MAXIMUM SUSTAINABILITY

The BEUMER fillpac® FFS with a sustainability index of 60 (Excellent) offers sustainability at the highest level. The economy index of 20 is based, for example, on IE4 actuators and a throughput rate of up to 2,600 bags/h.

The innovative, compact, high-precision form-fill-seal system (FFS system) BEUMER fillpac® FFS masters all challenges posed by the filling and packaging of chemical and petrochemical products.

### THOROUGHLY ECONOMICAL

The BEUMER fillpac® FFS provides a high throughput rate. It forms, fills and seals up to 2,600 bags per hour. A master weighing device ensures that no material is wasted through overfilling. The tight seal prevents loss of material in further handling. The bags are made from a roll-fed film, which saves costs and storage space compared with other bag material. In addition, IE4 actuators ensure low energy costs, while simple operation via the BEUMER HMI increases the efficiency of the work operations. The system is also economical when it comes to maintenance, with longer maintenance intervals achieved thanks to a rugged design and minimized wear. The modular design also guarantees simple cleaning and short retrofitting and maintenance times.

### ECOLOGICALLY COMPATIBLE

Minimum use of paint, less steel, lighter weight: The BEUMER fillpac® FFS shows its ecological side right from the production stage. The system is also so compact that it fits in a standard container complete with the control cabinet, which allows eco-friendly transport. IE4 actuators reduce power consumption in operation. Electricity consumption per bag is 0.0019 kW. Compressed air consumption is only 52 l per bag. And last but not least, virtually all machine components are recyclable.

### SOCIALLY RESPONSIBLE

Very little welding work is required for installation, so that harmful fumes and risks for the eyesight are minimized. The machine is enclosed in order to prevent injuries in operation. Access to the danger zone is not possible. For servicing, the advantages of good accessibility and ergonomic design become especially evident. For example, the units are positioned at a convenient height to work on.



## RELIABLE, CAREFUL AND SUSTAINABLE FILLING WITH THE BEUMER FILLPAC® FFS

### HARD FACTS BEUMER FILLPAC® FFS

- › Bag forming, filling and sealing in one system
- › Throughput rate of up to 2,600 bags per hour
- › Compact, space-saving, enclosed design
- › Robust, low-vibration technology with oscillation-free bag guide system
- › Intuitive operation via an ergonomic BEUMER HMI



### TECHNOLOGY AS FLEXIBLE AS IT IS SUSTAINABLE

The BEUMER fillpac® FFS performs three functions in one compact system: It forms bags from a prefabricated PE tubular film, fills them reliably and carefully with the desired product and heat seals the bags. Products with high temperature, unusual flow characteristics or low form stability are no problem – regardless of whether they are technical plastics such as PE, PP, PA and PS or salts, building materials, fertilisers or foodstuffs. There are numerous options allowing the unit to be adapted flexibly to different customer requirements. These include, for example, automatic film roll changing, freestanding film unwinding, rail-mounted or freely movable construction, and the processing of pre-stretched films.

The individual work stations for forming, filling and sealing are based on a modular design. This means that every unit can be treated individually for the purposes of retooling, cleaning or maintenance and can be exchanged if necessary. Thanks to its unique, symmetrical construction the BEUMER fillpac® FFS can also be operated flexibly from any side.

### WELL-DESIGNED CONCEPTS

In order to minimize wear, the BEUMER fillpac® FFS guides bags in a linear motion to the individual work stages. That prevents the bags oscillating and thus also avoids vibrations that can be transferred to the system and can quickly result in wear.

Fast, reliable control and operation of the system is enabled by an ergonomic operating terminal: The BEUMER HMI supports the user by means of an optimised user interface and navigation with an easy-to-follow, intuitive interaction concept.

BEUMER Group GmbH & Co. KG  
Postfach 1254 · D-59267 Beckum  
Tel. +49 (0) 25 21 - 24 0  
Fax +49 (0) 25 21 - 24 280  
E-Mail [beumer@beumergroup.com](mailto:beumer@beumergroup.com)

For more information, visit  
[www.beumergroup.com](http://www.beumergroup.com)

Beumer reserves the right to make modifications that serve technical progress.



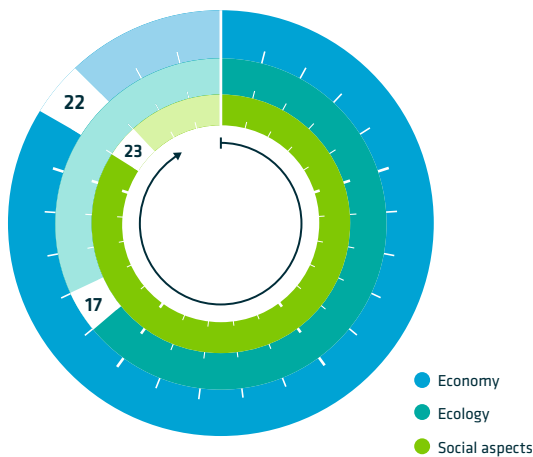
*Products and technologies with the BEUMER label "made different" are characterised by enhanced sustainability. It is based on their economic, ecological and social performance evaluated by the BEUMER Sustainability Index (BSI).*

# BEUMER PARCEL PICKER® – THE GREEN UNLOADING ASSISTANT FOR MAIL AND PARCEL LOGISTICS

## PRODUCT GROUP

› Logistic systems › BEUMER Parcel Picker®

**61**  
Level:  
Excellent



## INNOVATIVE UNLOADING TECHNOLOGY WITH EXCELLENT SUSTAINABILITY

With a sustainability index of 61 (excellent), the BEUMER Parcel Picker® proves to be not only innovative, but also sets a new milestone in terms of sustainability. The social index of 23 is based on considerations made when developing the Parcel Picker® to minimise the required physical demands for the employee during operation.

Whether used for swap bodies or roller containers, the BEUMER Parcel Picker® is a fast and ergonomic solution for unloading packages, parcels and shipping units of different weights and sizes.

## MULTIPLE ECONOMIC BENEFITS

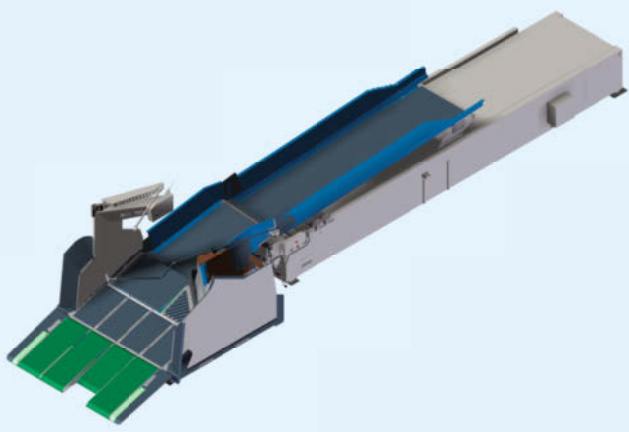
The BEUMER Parcel Picker® allows for a faster and more efficient way of unloading, while maintaining consistently high throughput. Compared to manual unloading, throughput levels can be more than doubled. During implementation, there is no need to change the building structure or invest into the construction of additional gates. The handling charges per item are reduced. The physical relief for the operator and the functionalities for accident prevention lead to fewer employee absences and less downtime costs. The gentle handling of packages leads to less damage to products and fewer customer complaints. BEUMER's global customer support offering includes remote maintenance and ensures the highest level of system availability.

## ENVIRONMENTALLY FRIENDLY

The energy-efficient drive control of the BEUMER Parcel Picker® contributes to its environmental sustainability: all of its drives are frequency-controlled which, if the workload is low, automatically reduces the conveying speed and, therefore, its energy consumption. Reduced speed also means less noise emissions. Emissions are further reduced by using conveyors with a sandwich base. Nearly all of the materials used can be recycled. Simple, compact shipping units require only very low packing and transport costs.

## A REAL SOCIAL MILESTONE

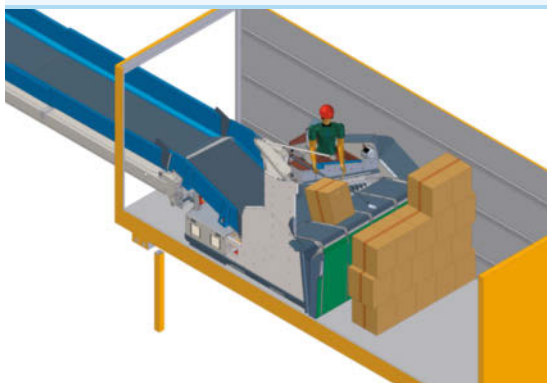
The BEUMER Parcel Picker® relieves the physical burden of its operators, as no more heavy lifting or carrying the packages over long distances is required. Particular attention was paid to minimise the required physical demands for the employee during operation, as well as to adhere to the latest aspects of occupational safety and health. It can be optimally adjusted to the height of the operator due to a device for height adjustment, and automatic assistance systems help the operator during operation. The operator station has been specifically designed to ensure an adequate safety distance between the packages and the operator and to keep the escape route free of packages.



## UNLOAD PACKAGES EFFICIENTLY AND GENTLY WITH THE BEUMER PARCEL PICKER®

### HARD FACTS BEUMER PARCEL PICKER®

- › unloading time reduced by 50 % compared to conventional methods
- › less physical strain compared to manual unloading, proven through scientific methods
- › quick coupling system for coupling the unloading unit with the telescopic belt conveyor
- › gentle handling of packages and safe material flow
- › safe work environment due to protected operator station, with barrier-free escape route
- › simple troubleshooting due to easy accessibility
- › robust, low-maintenance technology



### QUICK UNLOADING OF SWAP BODIES AND ROLLER CONTAINERS

The semiautomatic BEUMER Parcel Picker® simplifies and accelerates the unloading of swap bodies and roller containers. In order to unload swap bodies, the telescopic belt conveyor moves the unloading unit, which is coupled to the face side, towards the opening of the container from where the operator moves it into the right direction. Once the front part of the BEUMER Parcel Picker® has moved into the container, the control switches into automatic operation and aligns the system so that the vertical pick-up conveyors are in front of the first packages. The packages are picked up on multiple levels, which ensures the particularly gentle handling of the items.

The packages are pulled on the conveying system with an ergonomically designed, manually operated package manipulator. The side walls on the telescopic belt conveyor prevent the packages and parcels from falling off the belt conveyor. In case of roller containers, an additional module is used. The packages are unloaded in bulk and transferred by the telescopic belt conveyor with integrated side walls to the subsequent conveying technology.

### ERGONOMIC AND SAFE

The latest scientifically proven methods were applied for the development of the BEUMER Parcel Picker®, in order to achieve optimum workplace ergonomics and occupational safety, as well as an optimised operating process. The layout of all necessary control and display elements is clear, and they are easy to reach. The direction of movement is controlled with a joystick from the operator station, while the actual movement is triggered with a foot-operated button. The package manipulator is particularly light and suspended from its centre of gravity to make it neutral in weight. It can be adjusted to the height of the operator using a motor.

Numerous automatic assistance systems support the operator during operation, such as automatic accumulation recognition and clearance, as well as automatic item wall recognition when approaching unloading zones. When driving backwards, a camera turns on automatically, making sure that the system operator can always see all activity on his display, even when travelling in reverse.



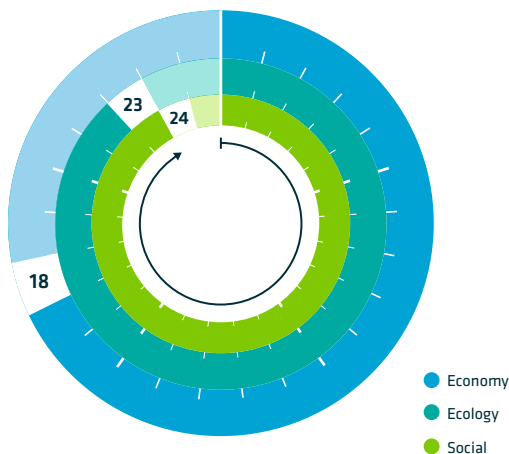
*Products and technologies carrying BEUMER's "made different" seal are characterised by their sustainability - based on their economic, environmental and social performance as measured by the BEUMER Sustainability Index (BSI).*

## BEUMER STRETCH HOOD® A – AN EFFICIENT, SPACE-SAVING MIRACLE FOR SUSTAINABLE FILM HOOD PACKAGING

### PRODUCT GROUP

- › Packaging › Transport packs
- › Stretch-hooding systems › BEUMER stretch hood® A

**65**  
**Level:**  
**Excellent**



### COMPACT PACKAGING SYSTEM WITH HIGHEST SUSTAINABILITY

The BEUMER stretch hood® A is setting new standards, a fact demonstrated by its sustainability index of 65 (Excellent). Lower space requirements and extremely fast film roll changeover contribute to an economy index of 18.

The BEUMER stretch hood® A is a sustainable packaging machine based on the stretch hood method. Higher throughput, space-saving design and ergonomic operation ensure high performance in the smallest possible space.

### ECONOMICALLY ATTRACTIVE

The BEUMER stretch hood® A stands for lower costs and higher efficiency. Its compact design with no platform means efficient construction and thus an excellent price-performance ratio. Fewer wearing parts and ground-level maintenance reduce expensive downtimes, and its efficient drive technology saves energy. Thanks to the compact design, it requires a smaller footprint and can be transported at lower cost. At the same time, the machine packages up to 120 pallets per hour with very high availability. Film rolls can be exchanged extremely quickly, film cooling periods are eliminated, and optimised sequences of motions minimise the incidence of faults.

### REDUCED ENVIRONMENTAL IMPACT

Even during manufacture of the machine, materials and energy are saved as a result of its design. Energy-saving motors and a low compressed-air requirement ensure a positive energy balance; the compressed-air requirement has been reduced by 80 percent compared with the predecessor model, tremendously reducing the costs. Additional eco-friendly features include the ability to use very thin film and protection against faulty hoods. The optimised size and design reduce the weight and volume of the machine and also make it possible to produce more ecologically practical transport units.

### SOCIALLY RESPONSIBLE, ERGONOMICALLY OPTIMISED

Ideal working conditions with the BEUMER stretch hood® A mean lower noise emission and less physical effort when inserting the film roll with industrial trucks or lifting gear. Because the machine dispenses with platforms and steps, the associated disadvantages such as accident risks or time losses are eliminated. All elements required for control and operation are accessible close to the ground, which makes the packaging machine one of the safest on the market.



## PACKAGING PALLETISED UNITS FASTER AND MORE ECONOMICALLY WITH THE BEUMER STRETCH HOOD® A

### HARD FACTS

#### BEUMER stretch hood® A

- › Safer working and lowest installation height thanks to design with no platform or steps
- › Lower space requirement thanks to 30 percent smaller footprint
- › Higher production capacity of up to 120 pallets/hour
- › Energy-saving drive technology
- › Safe maintenance without lowering the sealing and cutting unit
- › Film feed without use of tools
- › Intuitive operation via the soft-touch panel BEUMER Group HMI
- › Reefing units move biaxially
- › No interruption of the conveyor system thanks to specially designed lifting frame
- › Optimally matches customers' requirements due to modular principle



### PROVEN METHOD MEETS INNOVATIVE TECHNOLOGY

The BEUMER stretch hood® A compact, high-performance packaging machine packages palletised load units quickly, securely and sustainably with water-proof film hoods using the proven BEUMER stretch hood process with improved mode of operation.

Using BEUMER Multistretch, a process for displaying all types of packaging applications, the BEUMER stretch hood® A positions the film over the palletised load unit with the utmost precision. This allows the modified reefing version BEUMER OptiStretch to make full use of its advantages optimising the film unwinding process and stretching the film in all directions. The U-shaped reefing frame is lowered close to the palletised stack so that the stack can be covered with the film hood very precisely and efficiently – without tearing or creasing the film or other interfering contours. Thanks to the biaxial stretch method used by BEUMER, horizontal and vertical tensile forces acting on the film are combined so that even irregular packages and sensitive piece goods such as pressure-sensitive products have high loading stability. This protects goods reliably against all environmental influences, increases load stability and achieves an excellent display effect for the presentation of goods.

### SMALLER, FASTER AND MORE ECONOMICAL

With its 13.7-m<sup>2</sup> footprint and low overall height, the BEUMER stretch hood® A is the most compact system in the BEUMER stretch hood® series and can be installed even where there is limited space available in the packaging area. Nevertheless it is really huge in terms of performance, with a packaging capability of up to 120 pallets per hour.

The BEUMER stretch hood® A also has the edge over its competitors when it comes to film replacement and maintenance work. Thanks to its optimised design and process technology, everything can be performed very quickly, simply and reliably. This minimises downtimes and thus increases productivity. The system also offers the advantage of permanently optimised, intuitive control via a soft-touch panel that provides you with a graphical user interface as well as training programs, some with video support.

BEUMER Group GmbH & Co. KG  
Postfach 1254 · D-59267 Beckum  
Phone +49 (0) 25 21 - 24 0  
Fax +49 (0) 25 21 - 24 280  
E-mail [beumer@beumergroup.com](mailto:beumer@beumergroup.com)

For more information, visit  
[www.beumergroup.com](http://www.beumergroup.com)

Beumer reserves the right to make modifications that serve technical progress.





BEUMER Group GmbH & Co. KG  
Postfach 1254 · D-59267 Beckum  
Phone +49 (0) 25 21 - 24 0  
Fax +49 (0) 25 21 - 24 280  
E-Mail: [beumer@beumergroup.com](mailto:beumer@beumergroup.com)

For more information, visit

[www.beumergroup.com](http://www.beumergroup.com)