

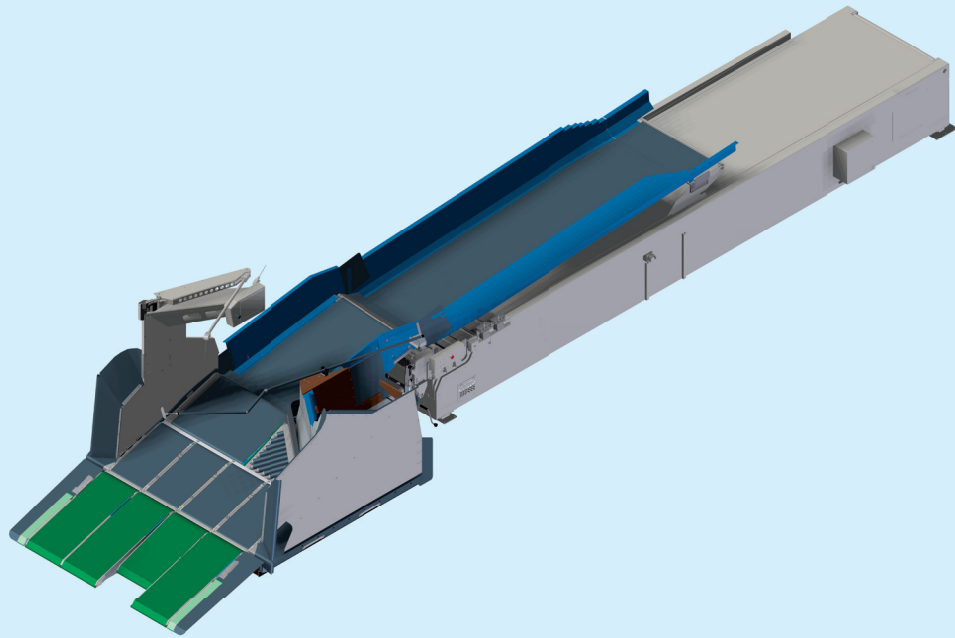


BEUMER PARCEL PICKER® **FAST, ERGONOMIC AND SAFE**

BEUMER PARCEL PICKER®

UNLOAD PACKAGING UNITS

GENTLY AND EFFICIENTLY



Global competitive pressure demands constant improvements to processes in post and parcel logistics, which places increasing pressure on employees. To enable companies to meet growing demands for fast, error-free deliveries with higher transfer volumes, while easing the physical burden on their employees, BEUMER Group has developed the BEUMER Parcel Picker®.

GENTLE UNLOADING

The semi-automatic BEUMER Parcel Picker® allows parcels, packages and other shipments to be unloaded quickly and with minimum physical exertion, regardless of whether swap bodies or roller containers are used. The modified, stationary telescopic conveyor moves the unloading unit, which is frontal mounted and which the operator can actively steer, in the direction of the swap body. The parcels are drawn onto the conveyor system via an ergonomically shaped, manually operated parcel manipulator. An add-on module is used with roller containers.

The parcels are unloaded in bulk and transferred via the telescopic conveyor with integrated side walls downstream the conveyor system.

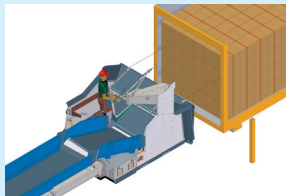
HIGHER PRODUCTIVITY

The sturdy BEUMER Parcel Picker® offers much improved performance compared to manual unloading, which has previously been the norm: now, parcels no longer have to be physically lifted and carried. This eases the burden on employees, counters their physical fatigue and makes the whole unloading process faster and more efficient. Assuming an average product range and an operator who is used to the system, throughputs of more than twice the manual unloading rate can be achieved.

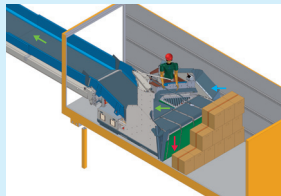
IMPROVED FOOTPRINT

In existing buildings, the BEUMER Parcel Picker® will enable throughputs to be doubled with no need to alter the building structure. When new buildings are being designed, the number of gates can be reduced on account of the increased throughput, which also improves the building's footprint.

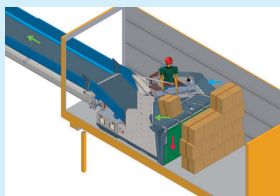
UNLOADING SWAP BODIES



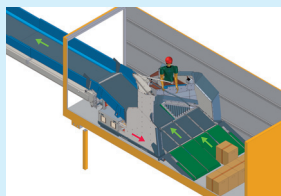
1. Basic position/positioning in front of swap body



2. Upper unloading position



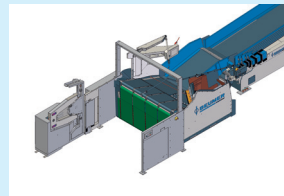
3. Middle unloading position



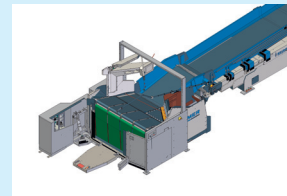
4. Lower unloading position

Sequence of functions for swap body unloading mode

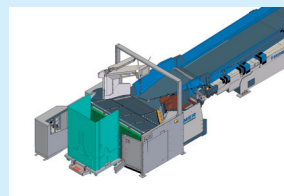
ROLLER CONTAINER UNLOADING



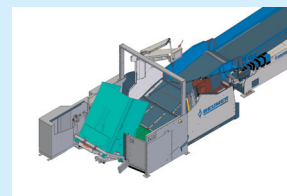
1. Basic position/tip station at rest



2. Tip station in working position



3. Tip station with positioned roller container



4. Unloading position

Sequence of functions for roller container unloading mode

SAFETY FROM ALL ANGLES

Safety is high on the priority list with the BEUMER Parcel Picker®. The operator station was designed to ensure that there is a sufficient safety gap between parcels and the system operator at all times, for instance. Side walls on the telescopic conveyor prevent parcels or packages from falling onto the floor. A joystick in the operator station controls the direction of movement, while the movement itself is initiated using a foot switch. A camera automatically operates during reversing, to ensure that the system operator can always see what is happening behind him on the monitor.

ERGONOMICS FOR IMPROVED PERFORMANCE

Innovative and up-to-date in every respect: the BEUMER Parcel Picker® represents the state of the art. The latest scientific methods were applied in the development process to achieve the best possible workplace ergonomics and industrial

safety, together with an optimised work process. For example, a motorized support allows the height of the parcel manipulator to be adjusted to best suit the physical height of the operator. All controls and display elements are arranged in an easy-to-follow manner and can be conveniently accessed. The operator is supported by a large number of automated assistance systems.

REDUCED ABSENCE, BETTER EMPLOYEE RETENTION

Not only is unloading more comfortable and efficient with the BEUMER Parcel Picker®, it's also better for the operator's health: no frequent bending, heavy lifting or carrying over long distances is required. This can cut the amount of time employees are absent through illness, reducing the associated costs. It also means the services of older, experienced employees can be retained for longer.

HIGHLIGHTS

- › Unloading time cut in half compared to the conventional method of working
- › Improved building footprint
- › Gentle handling of parcels
- › Ergonomically designed workplace
- › Safe working environment
- › Sturdy, low-maintenance technology

BEUMER Group GmbH & Co. KG

Postfach 1254 · 59267 Beckum, Deutschland

Tel. +49 (0) 25 21 - 24 0

Fax +49 (0) 25 21 - 24 280

E-Mail beumer@beumergroup.com

www.beumergroup.com

Änderungen, die dem technischen
Fortschritt dienen, bleiben vorbehalten.

Ident.-Nr.: 3000113-BE-700-V1-1.1-EN-0516-GB150399

**MADE
DIFFERENT**

*Products and technologies carrying BEUMER's
"made different" seal are characterised by their
sustainability based on their economic, environ-
mental and social performance as measured by
the BEUMER Sustainability Index (BSI).*